

Innes House

Fully Accessible Housing for All



Barrier free, fully accessible design concepts address the needs of physically disabled adults, as well as the needs of seniors wanting to “age in place” and avoid long term care facilities, a growing sector of our population. The potential market is huge, and the cost is minimal.

Alan R. Perks, PEng., FCSCE, FEIC
President's Task Force on Accessibility
Canadian Society for Civil Engineering

For info see links in footer:

An innovative community partnership between PHSS community care, and Theberge Homes has gone “beyond the code” to create a new supportive living opportunity in Ottawa; an approach that meets the needs of persons with disabilities now, and can be replicated for other persons with disabilities as well as ageing seniors who wish to remain in neighbourhood homes rather than in long term care. It can be done!

PHSS is a non-profit, community-based organization providing assistance to people with significant physical and/or developmental disabilities to reach their full potential in the community. Through a unique suite of individual services and supports, PHSS provides an alternative to institutional care.
www.phsscommunity.com

THEBERGE HOMES builds for the customer, for their demands in a fast paced, always evolving society. This means choosing a development location where urban convenience is at your doorstep and your daily routines are made easier by a smarter built home – a better build = a better lifestyle.
www.thebergehomes.com

Many housing professionals do not realize that the current Building Codes are “minimal” and simply not sufficient for persons with complex care needs. These codes include many important details regarding switches and doorknobs and handles, etc., but if a person relying on wheelchairs and lifting devices cannot get into the unit and comfortably use the bedroom and washroom, none of that matters.

Barrier-Free design concepts can be applied to both new and existing housing to create fully accessible housing for all. This flyer illustrates what can be done easily, and at low cost, to create a home for all.

A brochure titled “Beyond Code” voicesandchoices.org is most helpful.



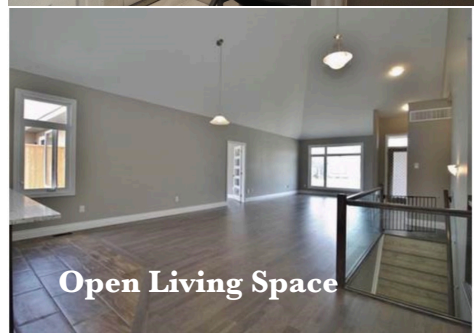
Adjoined Bungalow



Roll In Shower



Kitchen /Meals



Open Living Space

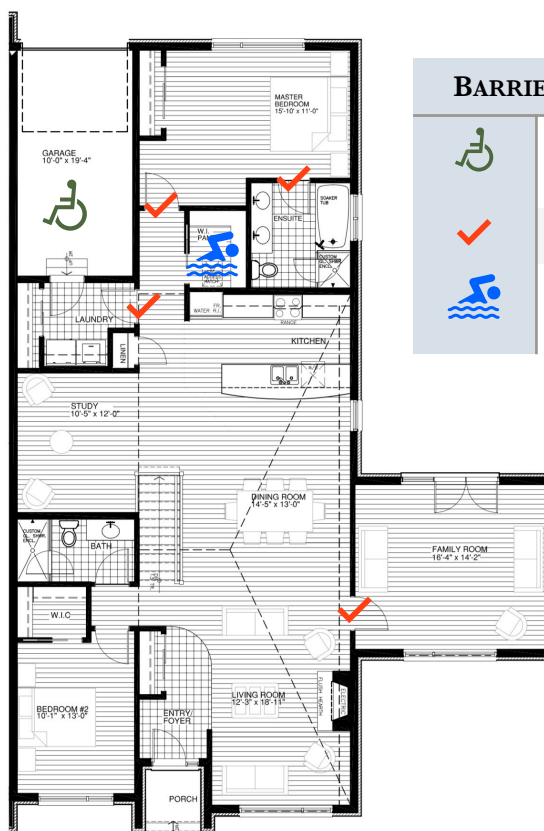
The essential elements of this barrier free renovation included:

- An Open Space Floorplan.
- Wider Doorways & Hallways (36-38" Preferred)
- Clear Floor Spaces & Wider Turning Circles for Wheelchairs.
- A Roll-in Shower Installed.
- Renovations Done Over a Period of 4 Weeks Before Move-in Day.

Innes House

Innes House is a 3 year old 2 bedroom bungalow with sufficient open space to accommodate persons using wheelchairs who need personal support for daily living. While not originally designed for wheelchair usage, the floorplan showed that with a few modifications, the residence could be made comfortable and barrier free.

This is a very good example of what can be quickly done to accomodate persons with disabilities and complex care needs to live comfortably in the community.



GROUND FLOOR PLAN
2026 sq.ft

BARRIER FREE ADAPTATIONS



**Wheelchair Entry
Ramp in Garage**



Door Widenings



**Pantry converted into
Roll In Shower**